

Combatting Heavy Equipment Theft

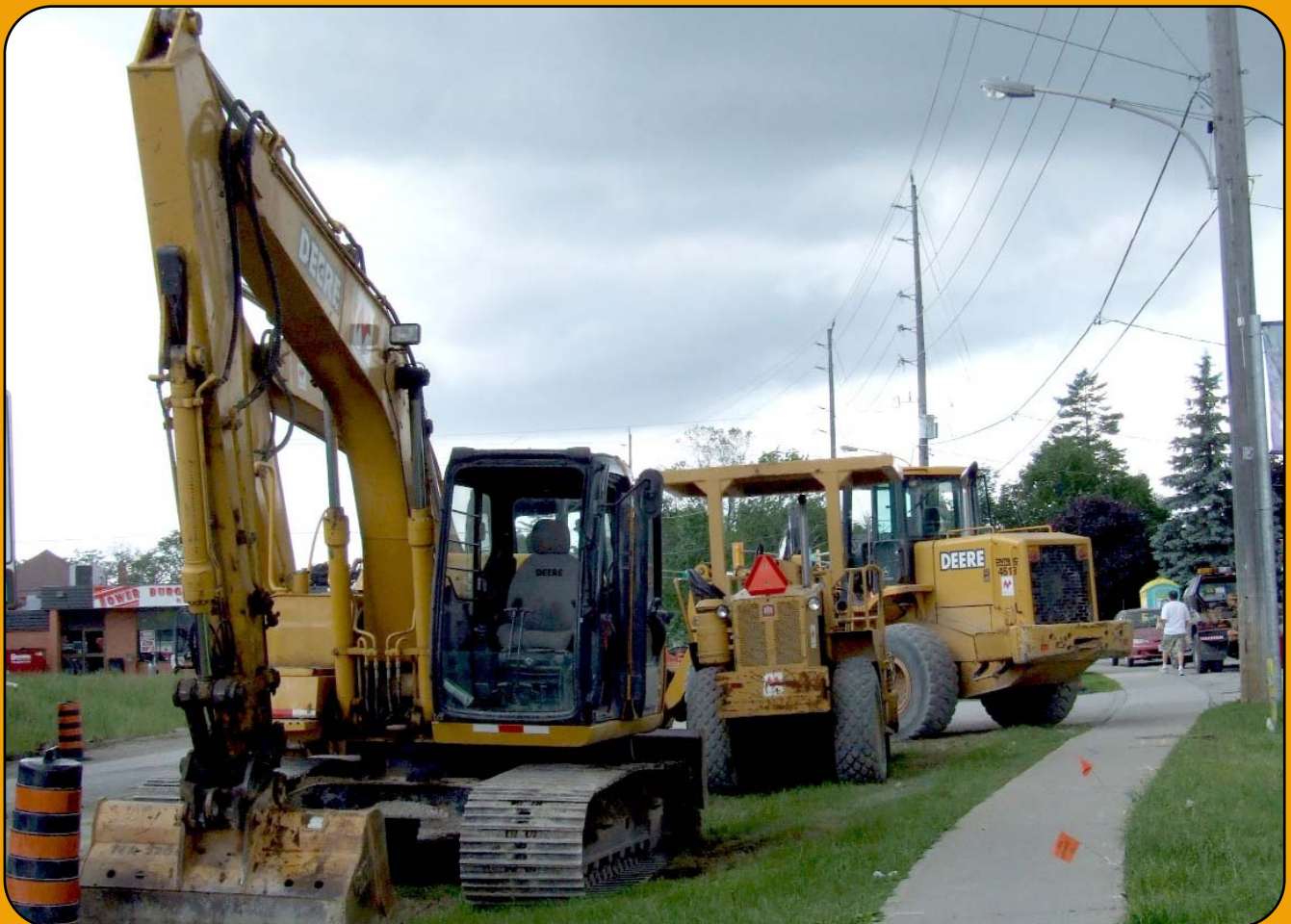
An Officers' Guide to the Proper Identification of Construction Equipment

Volume 4

2008



Ontario Sewer and Watermain
Construction Association



This guide book was produced by:

George Kleinsteiber
Retired Detective Constable
Auto Theft Section
Ontario Provincial Police
Tel: (705) 791-8000
e-mail: heavymetal@rogers.com

Ontario Sewer and Watermain Construction Association
5045 Orbitor Drive, Unit 12, Suite 300
Mississauga, ON L4W 4Y4
Tel: (905) 629-7766
Fax: (905) 629-0587

The contents of this guide book may be reproduced **only** with the written permission of the Ontario Sewer and Watermain Construction Association. Credit to the OSWCA must be included and clearly visible.

Section 354(2) of the Criminal Code of Canada states:

- (2) In proceedings in respect of an offence under subsection (1), evidence that a person has in his possession a motor vehicle the vehicle identification number of which has been wholly or partially removed or obliterated or a part of a motor vehicle being a part bearing a vehicle identification number that has been wholly or partially removed or obliterated is, in the absence of any evidence to the contrary, proof that the motor vehicle or part, as the case may be, was obtained, and that such person had the motor vehicle or part, as the case may be, in his possession knowing that it was obtained,
 - (a) by the commission in Canada of an offence punishable by indictment;
- (3) For the purposes of subsection (2), "vehicle identification number" means any number or other mark placed on a motor vehicle for the purpose of distinguishing the motor vehicle from other similar motor vehicles.

Definition of a Motor Vehicle:

"Motor vehicle" means a vehicle that is drawn, propelled or driven by any means other than muscular power, but does not include railway equipment;



Ontario Sewer and Watermain
Construction Association

Introduction

The Ontario Sewer and Watermain Construction Association continues to work to combat the never-ending problem of construction equipment theft.

This guide book is designed to assist law enforcement officers in the location of public V.I.N. numbers on construction equipment. Every attempt has been made to ensure its accuracy.

Note: In this publication PIN (Product Identification Number) has the same meaning as VIN (Vehicle Identification Number).

Table of Contents

Excavators	2
Wheel Loaders	7
Backhoe Loaders	13
Crawler Loaders	16
Crawler Dozers	17
Skid Steer Loaders	20
Compactors - Smooth Drum	24
Compactors - Padfoot	28
Mini-Excavators	30
Air Compressors	35
Acknowledgements	36
Industry Contacts	inside back cover

Excavators

Serial Number Location



Case

Models

40LC	220B	850D	1088	9020	CX240
85D	225D	880B,C,D,	1187	9030	CX 75
120D	240D	R	1280	9040	CX80
125B	270D	888	1286	9045	CX120
135D	350D	980	9007	9050	CX135SR
160D	450D	1080	9010	9060	CX160
170B	650D	1085	9010	CK62	CX175
200D	688	1086	9020	CX225	CX210

Serial Number Information

10 digits, exampleDAC0403344

Possible 2006N6D445123

PIN # Location: Right side lower edge of cab below windshield (same as Caterpillar and John Deere). Possible second plate inside cab.

Machines are manufactured in US, France & Japan. Plates may differ depending on country of manufacture.



Caterpillar

Models

205	224	302.5	312B	320	330B L
206	225,B,C,D	303.5	313,B,C	320B L	345
211	227	304.5	315B,C,L	321	345B L
212	229,D	307	315B	322	350
213	231D	307B,C	317	322B L	365
214	235,B,C,D	308	318	325	365B L
215, B	245B,D	311B,C	318B	325B L	375
219	301	312B,C	320	330	385

Serial Number Information

Pre 2001 - 8 digits, example4SS01498

2001 and later - 17 digits, example ...CAT0385BCANS00237

(no year is specified in PIN number)

PIN # Location: Same as John Deere.

Note: On some models, second serial plate in cab under seat, or on shelf behind driver.



Daewoo/Doosan

Models

015	170LC-III	330LC	DX300
030	220LC	400LC	DX340
035	225LCV	450LC	DX420
055	255LCV	75V	DX480
070	280LC	DX140LCV	DX520
130LC-V	290LC	DX175LCV	

Serial Number Information

3,4 or 5 digits, examples164, 1105

2005 and laterDHEKHEBJ0E70005083

PIN # Location: Same as John Deere and Caterpillar. Note: in 2005 Daewoo was sold to Doosan.

Excavators

Serial Number Location



Hitachi

Models

EX100	EX230	EX550	UH-12	Zaxis 200-800
EX1000	EX2500	EX5500	UH122	
EX110	EX270	EX750	UH123	
EX1100	EX330	UH045	UH143	
EX1200	EX3500	UH-07	UH172	
EX160	EX370	UH082	UH181	
EX200	EX450	UH083	UH261	

Serial Number Information

7 to 10 digits, examples12L-30858, 001355, ACOX 120000
14C-78843, 183-1295
17 digit, exampleHCM1HH00K00033455

PIN # Location: Same as John Deere and Caterpillar.

2004 and newer models are all "Zaxis" series and have 17 digit PIN numbers.



Hyundai

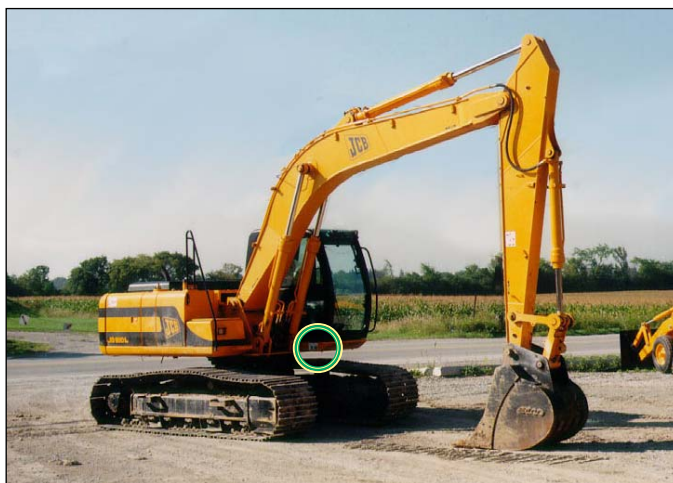
Models

R130 LC-3	R250 LC-3	R450 LC-3
R160 LC-3	R290 LC-3	R500 LC
R180 LC-3	R320 LC-3	
R210 LC-3	R360 LC-3	

Serial Number Information

11 digits, exampleEL01FF10433

PIN # Location: Same as John Deere and Caterpillar.



JCB

Models

JS70	JS260
JS130	JS330
JS160	JS450
JS200	JS460

Serial Number Information

6 digits, example758853

PIN # Location: Same as John Deere and Caterpillar.

Excavators

Serial Number Location



John Deere

Models

15	190E	350D	550LC	792C
25	200LC	370	590D	793D
30	225D	450D	595, D	850D
70	230LC	450L,C	650D	890A
80	240D	460LC	690BCDE	892
110	270D	490D,E	693BCD	892DE
120	290D	493D	750	990
160LC	330LC	495D	790DE	992DE

Serial Number Information

13 digits, examplesP00110X020133, FF892DC001922

PIN # Location: Same as Caterpillar and Case.

Note: Larger models are Manufactured by Hitachi for John Deere and may have a Hitachi PIN stamped in, but can't be cross-referenced.



Kobelco

Models

17SR	80CS	SK135SR	SK235SR	SK300LC
27SR	ED150	SK150IV	SK250	SK330
30SR	ED180	SK170	SK260	SK350
35SR	ED185	SK200IV	SK270	SK485
50SR	SK115PZ	SK220	SK290	SK850
70SR	SK130IV	SK2201V	SK295	

Serial Number Information

7 digits, exampleYCU-1218

PIN # Location: On larger models, PIN plate is under door. On small machines, PIN plate is in same location on other side of cab similar to Case and Caterpillar.



Koehring

Models

466	866
505	1066
666	

Serial Number Information

5 digits, example23018

PIN # Location: Left side of boom.

Excavators

Serial Number Location



Komatsu

Models

PC05	PC40MR	PC120	PC220,LC	PC300
PC12R	PC45R	PC128	PC228	PC400
PC15R	PC60,L,U	PC150,LC	PC228	PC750
PC20	PC75R	PC180LC	PC250	PC1100
PC30	PC80	PC200	PC270	
PC27R	PC90	PC200Z	PC270LC	
PC35R	PC95	PC210LC	PC280	
PC40	PC100	PC220	PC300	

Serial Number Information

6 digits, examplesA83462, 102482, 01018

PIN # Location: Same location as Case and Caterpillar. Komatsu make their machines in Japan and the United Kingdom.



Liebherr

Models

R900	R944	R984
R904	R954	R992
R914	R962	R994
R924	R964	R995
R934	R974	R996

Serial Number Information

7 digits, example 649-5175

PIN # Location: Right front of machine near step.



Link-Belt

Models

1600	2800 LF	4300
2650	3400	5800
2700	3400 LF	130LX
2800	3900	210LX

Serial Number Information

8 digits, examplesE4I9-1651, K3J26322

PIN # Location: Similar to Case, Caterpillar and other Manufacturers.

Excavators

Serial Number Location



➤ New Holland

Models

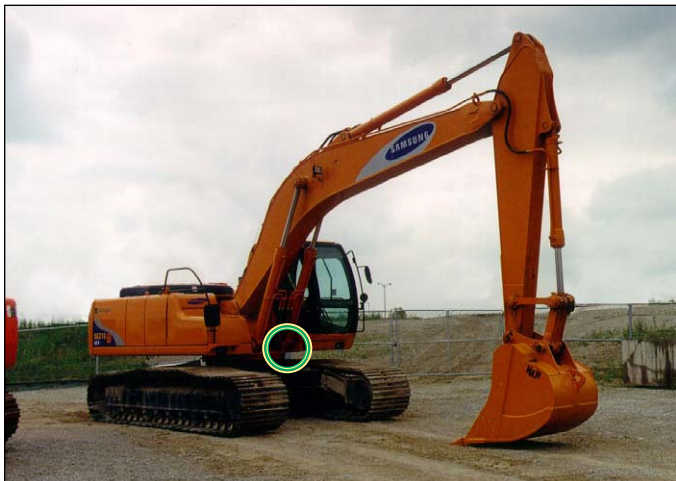
E130
E160
E175
E215

Serial Number Information

9 Digits - exampleN8DA12319

(2nd digit is year of Manufacture. 3rd digit is Plant.)

PIN # Location: On front of machine. PIN plate may be attached with chrome drive rivets, or two sided tape.



➤ Samsung

Models

SE170 W	SE240LC-3
SE210LG-3	SE280LC-3
SE50-3	

Serial Number Information

7 digits, examplesAFY 1832, FCY 1246, EJY 0112

PIN # Location: Similar to Case, Caterpillar and most other Manufacturers. In 1998 Samsung was purchased by Volvo and Samsung were no longer produced.



➤ Volvo

Models

EC55	EC210LC	EC360
EC140	EC240	EC460
EC150	EC290	
EC160	EC330	

Serial Number Information

13 digits, example. EC290ICCO3381

PIN # Location: Same as Case, Caterpillar and most other Manufacturers.

Wheel Loaders

Serial Number Location



Case (full Size - new models)

Models

521D	621C	721C	821C	921C
621	721	821	921	
621B	721B	821B	921B	

Serial Number Information

older series (W10, 20, 30s) - 7 digits, example . . . 9107004
 newer models to 2005 - 10 digits, example JEE012378
 2006 and later N6E450003
 European made have serial numbers - example . . 5811733

PIN # Location: On some models PIN plate will be on left side under operator's cab. On other models PIN plate will be on right side below operator's cab. PIN plates on right side will have number stamped close to plate. On old "W" models the plate will be in the cab.



Case (mid-size)

Models

21E	221D,C,E
21D	321D,E
121B,C,E	

Serial Number Information

6 digits, example 581212

PIN # Location:

321D - left side of machine near articulation point in front of cab.
 221D - Left side of machine under operator's cab.

Note: Machines are made in Germany and do not follow Case PIN numbering guide lines.



Case (old style)

Models

W9	W18
W10	W20
W12	W24
W15	W30

Serial Number Information

examples 9125501
 JAK0025223

PIN # Location: Below dashboard inside operator's cab. Must open door to observe.

Wheel Loaders

Serial Number Location



Caterpillar (mid-size)

Models

902	910
904B	914G
906	924F
908	930H

Serial Number Information

Pre 2001 - 8 digits, example7ES12345
2001 - 17 digits, exampleCAT0924GT9SW01500

PIN # Location: Left side of machine ahead of cab (similar to full size wheel loaders)



Caterpillar

Models

938G,H	980G,H	IT18
950G,H	988F II,G,H	IT24
962G,H	990 II	IT28
966G,H	992G	IT38
972G,H	994D,F,G,H	IT62G

Serial Number Information

Pre 2001 - 8 digits, example3CL12345
2001 and later - 17 Digits, exampleCAT0962GR4PW00533

PIN # Location: Left side of front articulation unit. Note: on early models 1960's, 70's & 80's, plate will be on right side, higher up.



Dresser/Dressta

Models


H-25B	H-90E	520,G	560,E
H-30B	H-100C	530E	570
H-50C	H-400C	534C	
H-60B	510	540	
H-80B	515,G	555C	

Serial Number Information

14 digits, example.....3380146C003018

PIN # Location: Plate is attached in driver's cab on firewall near accelerator pedal. Note: in 2005 the Company name was changed to Dressta.

Wheel Loaders

 Serial Number Location



Fiat-Allis

Models

FR10	FR35	FR130	FR180
FR11	FR70	FR130.2	FR180.2
FR12	FW80	FR140	FR220
FR15	FR90	FR140.2	FR220.2
FR20	FR100	FR160	
FR30	FR120	FR160.2	

Serial Number Information

13 digits, example.....R20A2T510003

PIN # Location: Left side of machine near articulation point.



Ford (old style)

Models

A62
A64
A66
A90

Serial Number Information

exampleA640353

PIN # Location: Behind left front tire.



Hyundai

Models


HL 35 HL 750
HL 720 HL 760
HL 730 HL 770
HL 740 HL 780

Serial Number Information

10 digits, example.....801FD10125

PIN # Location: On lip of cab just left of operator's step ladder.

Wheel Loaders

 Serial Number Location



John Deere (full-size late model)

Models

444 E,F,G,H,J	624 E,F,G,H,J	744 E,F,G,H,J
TC44 E,F,G,H	TC62 H	744 E,F,G,H-MH
544 E,F,G,H,J	644 E,F,G,H,J	844 E,F,G,H,J
TC54 H	644 E,F,G,H-MH	

Serial Number Information

13 digits, exampleDW544HX565665

PIN # Location: (1) On top of flat surface on left strut behind left front wheel housing. (Look in to view) (2) On flat side of left rail directly under cab behind operator's ladder.



John Deere (early A,B,C,D models)

Models

444 A,B,C,D	744 A,B,C,D
544 A,B,C,D	844 A,B,C,D
644 A,B,C,D	

Serial Number Information

exampleCK444EB001911

PIN # Location: Partially hidden under cab on either left or right side. Hard to see, or may be on side of left frame rail behind left rear tire.



John Deere (mid-size)

Models


244H,J
304H,J
324H,J
344H,J

Serial Number Information

13 digits, example.....LU304HX687838

PIN # Location: On front half of machine on left side directly in front of operator's cab (similar to Caterpillar location). Note: Made for John Deere by Liebherr.

Wheel Loaders

 Serial Number Location



Kawasaki

Models

50Z IV	70Z IV-2	95Z IV-2
60Z IV	80Z IV-2	115Z IV-2
65Z IV-2	85Z IV-2	135ZV
65TM-2	90Z IV-2	

Serial Number Information

8 digits, example 65C3 4613

PIN # Location: On left side of cab.



Komatsu

Models

WA 30	WA 150	WA 350	WA 500
WA 50	WA 180	WA 380	WA 600
WA 65	WA 200	WA 400	WA 700
WA 75	WA 250	WA 420	WA 800
WA 95	WA 300	WA 450	WA 900
WA 120	WA 320	WA 470	

Serial Number Information

5 to 6 digits, examples A30112, 53360

PIN # Location: PIN plate is attached to the right side of front section of machine behind right front fender. Komatsu also stamp the full PIN number below it in large stamps.



Liugong

Models

816	862
835	877
842	888
856	

Serial Number Information

Prior to 2008 - example 031224

2008 - example CLG00842H7014222

PIN # Location: On right front support arm.

Wheel Loaders

Serial Number Location



Michigan (VME)

Models

12B	55	125	L190	L475
35AWS,C	75	L160	L275	
45B,C	85	L175	L320	

Serial Number Information

10 digits, examplesL160V60419, 828A255003

PIN # Location: On smaller loaders, left side of machine behind front tire near articulation point (same as Komatsu). On large loaders, right rear outside of driver's cab.



New Holland (Case)

Models

LW 50B	LW 110B	LW 190B
LW 80B	LW 130B	LW 230B
LW 90	LW 170B	LW 270B

Serial Number Information

6 digits, example601008
 2003 and up (US Built).....N3F000578
 2004 and up (German Built)....560384

PIN # Location: Right side of front articulation unit, under cab. Plate may be usual Case-New Holland, or larger 4" X 5" on German built machines.



TCM

Models

835

Serial Number Information

example64300006

PIN # Location: On left front of cab area behind front tire.



Volvo

Models

ZL 302	L 32	L 50,E	L 120,E	230,E
ZL 402	L 35	L 60,E	L 150,E	
ZL 502	L 40	L 70,E	L 180,E	
L 30	L 45,E	L 90,E	220,E	

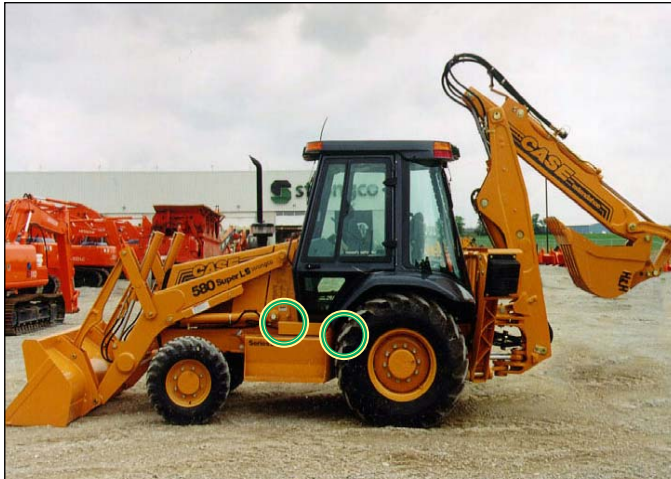
Serial Number Information

10 digits, example.....L70CV 11632

PIN # Location: May be on either left or right side high up on front articulation arm. Full stamped PIN is stamped below number

Backhoe Loaders

Serial Number Location



Case

Models

480	580 Super L	590M
570M XT	580L Turbo	590 Super M
570L XT Turbo	580 Super L	680,B,C,E,G,H,K,L
580, B,C,D,E, K,M	590 Super L	780,B,C,D

Serial Number Information

Old style - examples9879000, 17044575

1988 and up - 10 digits, exampleJJG0213787

2004 and later - 9 Digits, example ...N5C388221 (2nd digit is year of manufacture, 3rd digit is Plant)

PIN # Location: Older 580B,C & D models: left side of dash just inside left door of cab. 580K-early models: (1) directly under left door; (2) Late model: left side front of cab.



Caterpillar

Models

416,B,C,D,	424D	432D	446,B
E	426,B,C	436,B,C	450E
420D	428,B,C,D	438,B,C,D	
420D IT,E	430D	442D	

Serial Number Information

pre 2001 - 9 digits, examples08ZK12345, BFP12345

2001 and later - 17 digits, example ...CAT0420DCFD02567
(note: no year in PIN)

PIN # Location: 416 series: right side of machine in front of cab. Stamped PIN below it. 420 series: left side of machine in front of cab. Stamped PIN on right side of machine ahead of cab.



Ingersoll Rand

Models

B500

Serial Number Information

6 digits, example512312

PIN # Location: Left side of machine on outside edge of frame rail under driver's door.

Backhoe Loaders

Serial Number Location



JCB

Models		
1CX	214	217
2CX	214S	217S
3CX	215	
4CS,X	215S	

Serial Number Information
17 digits, exampleSLP214FCXE0484824
PIN # Location: Right Side of machine in front of cab.
(Same as Caterpillar)



John Deere

Models		
210C	310SE	410,B,C,D,E,G, J
300B	310SJ	500C
301A	310SG	510B,C,D
302A	315C,D,SE,SG	610C
310,A,B,C,D,E,J	401B,C,D	710B,C,D,J

Serial Number Information
13 digits, example.....T0310SE 835218
PIN # Location: Left side in front of cab, above lift arm. Note: older models -on outside surface of frame behind either left or right front wheel.




New Holland (CNH)

Models	
LV80	
LB90	
LB110	
LB115	
B95B	

Serial Number Information
LV80 sample PINLLV001032
PIN # Location: On LV 80 model, same as Case (on left side in front of cab). On LB90, 110, 115, PIN is on a Mylar label found on right side of machine in front of cab (as shown). They have gone to a large metal PIN plate on 2008 models.

Backhoe Loaders

 Serial Number Location



Ford (New Holland)

Models

555E
655E
675E
LB75
LB115

Serial Number Information

8 digits, example310 19618

PIN # Location: Right side of machine in front of cab.



Terex

Models

750
760
860

Serial Number Information

17 digits, example.....SMFB44TR027CM5759

PIN # Location: On left side of machine under driver's door opening.



Yanmar

Models

CBL40

Serial Number Information

example309608B

PIN # Location: In cab area of machine.

Crawler Loaders

Serial Number Location



➔ Caterpillar

Models

931	953C,WH
933C	963C,WH
933C LGP	973,WH
939C	

Serial Number Information

Pre 2001 - 8 digits, example4MS12345
2001 and later - 17 digits, exampleCAT0973CD4MS12345

PIN # Location: Left side of machine on support arm in front of cab.
Full 17 digit P.I.N. will be stamped beside plate on newer models.
8 digit on older machines.



➔ John Deere

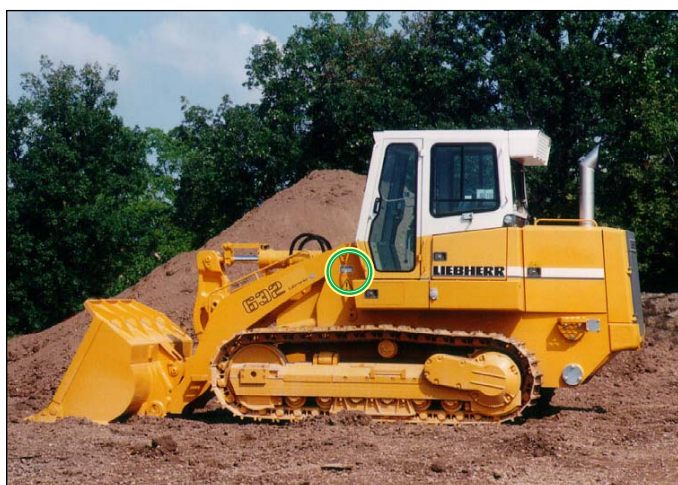
Models

455D	755G
455G	655C
555G	755C
655G	

Serial Number Information

13 digits, exampleT0455GA83887

PIN # Location: Same as Caterpillar, except on older 455D models where PIN plate is on front of left side tool box beside operator.



➔ Liebherr

Models


LR 611
LR 622,B
LR 632,B
LR 641

Serial Number Information

7 digits, example 393-2110

PIN # Location: Same as Caterpillar and John Deere.

Crawler Dozers

 Serial Number Location



Case

Models

550G,H	855C,D,E	1550
650E,G,H,K	1150B,C,D,E,G,H,K	1650K,L
750K,L	1155D,E,	1850K
850B,C,D,E,G,H,K,	1450B	
850L	1455B	

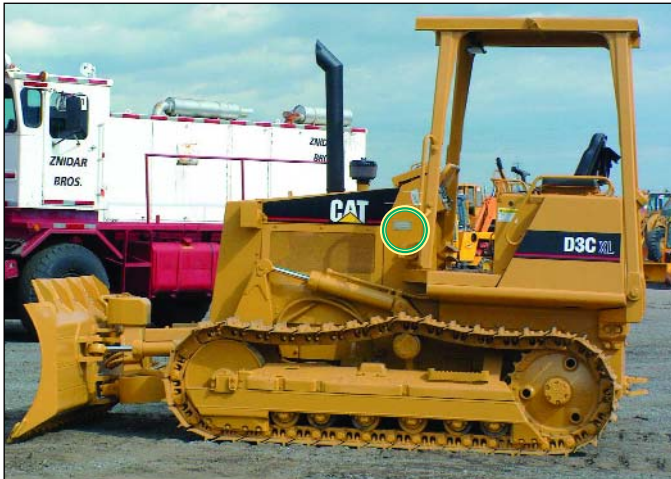
Serial Number Information

PRE 1988 - 7 digits, example . . .8480151

1988–2004 - exampleJJG0216015

2006 and newer - exampleN6GC012345 (*Second digit is year of Manufacture, 3rd is Plant.*)

PIN # Location: Right side of cab area near floor. Note: Case now purchase large model Crawler Dozers (850 and up) from Fiat Allis and install their Pin Plates on them. On new models, H, & K, PIN plate is now located on left front of engine hood up high as shown in photo. Photos of old location are available upon request.



Caterpillar

Models

D2	D7C,D,E,F,G,R,S,T
D3B,C,G,K	D8C,DE,F,K,L,N,R,S,T
D4B,C,D,E,G,H,K	D9DE,G,H,L,M,N,R,S,T
D5B,C,E,G,H,M,K	D10N,R,S,T
D6B,C,D,E,G,H,K,M,T	D11T
D6K,N,R,T	

Serial Number Information

Pre 2001 - 8 Digits, example9TS12345

2001 and later - 17 Digits, exampleCAT00D5MC3CR01975

PIN # Location: Up to D4, left side of engine compartment near cab area. On models D4 (high track) and larger, plate is on left rear of machine above left track and may be hidden by a protective box cover or difficult to see. On new D5K, PIN plate is installed on left side rear, just above track.



Dresser/Dressta

Models

TD-7	TD-15,M	TD-30
TD-8,H	TD-18	TD-35
TD-9,H	TD-20	TD-40
TD-12,C	TD-25	

Serial Number Information

14 digits, example.....4370001U000599

PIN # Location: On smaller machines, on kickplate behind drivers feet. On large machines, in engine compartment on firewall on left side. May also be found on right rear of machine.

Note: Dresser was bought out and is now called Dressta

Crawler Dozers

Serial Number Location



Fiat-Allis

Models

8	31	FD10	FD175
10,B,C	41	FD14C	FD195L
11	650	FD20	FD255
14	FD5	FD30	HD9
16,B	FD7	FD40	
21,B,C	FD9	FD50 FD80	

Serial Number Information

12 Digits, example 20BC1T008020

PIN # Location: On smaller models, on Plate attached to firewall under dashboard in driver's compartment, or on left side driver's toolbox. On larger machines, may be on engine firewall, or stamped in to final drive case, at right rear of machine, under cab and just over top of track.



International/Hough

Models

TD7	TD25
TD8	TD30
TD15	TD40
TD20	

Serial Number Information

example 4260128U027845

PIN # Location: On smaller models - in drivers cab below dashboard. On larger machines, on firewall in engine compartment.



John Deere

Models


450H	600	850C, J
450H-LT	650H-LT	950J
450H-LGP	650H LGP	850C-WT
550H	700,H, J	1050C,J
550H-LT	750C, J	
550H-LGP	750C-LGP	

Serial Number Information

13 Digits, examples T0450HH863865
LU1050C005288 (Liebherr Mfr.)

PIN # Location: As shown. Note: Other locations for PIN plate are directly under edge of left side driver's door, or above track on right side of machine. Also on 850J, plate is under left side door above track.

Crawler Dozers

 Serial Number Location



Komatsu

Models

D21A	D53A	D41P-6C
D21P	D57S	D155AX-5B
D31EX,PX	D65XP,EX,	D275AX-5
D37EX, PX	PX	D335A-5
D38E	D61EX-15	D555A-3
D39PX	D85EX-15	
D45A,P	D41E-6C	

Serial Number Information

4, 5 or 7 digits, examples.....4581, G1030, P085567

PIN # Location: Left outside of cab behind door area. Note: on some new machines, front left side of engine cover plate. On older D45A & P models, in cab behind drivers seat



Mitsubishi

Models

BD2G
BD2J

Serial Number Information

6 digits, example800003

PIN # Location: Left side directly in front of operator's compartment.



Shantui

Models

SD08	SD22
SD11	SD23
SD16	SD32

Serial Number Information

exampleSD16AA106899

PIN # Location: Left front upper corner of engine cover.
Note: Shantui is partially owned by Komatsu.

Skid Steer Loaders

Serial Number Location



Bobcat (Melroe) (IR)

Models

453	773	A300	S330
553	863	S100	S70
751	864	S185	T140
753	873	S205	T300
763	963	S330	

Serial Number Information

Pre-2008 9 digits, example.....514418702
 2008 and later on "A" series, exampleA0202387

PIN # Location: On smaller machines, left side behind left support arm, as shown in photo. Stand behind machine to view. On larger machines, on left side towards rear of machine under left lift arm.



Case

Models

40	95XT	440	465
45XT	410	440CT	1825B
60XT	420	445	1835
75XT	420CT	445CT	1845C
85XT	430	450	
90XT	435	450CT	

Serial Number Information

10 digits, example.....JAF0242168
 2005 and later - 9 Digits, example.....N5M450441 (2nd digit is year.
 3rd digit is plant - Wichita, KS)

PIN # Location: On floor kick plate behind driver's legs. On pre 2001 machines, plate is behind left leg. 2001 and newer behind right leg. On 2008 models, a new Pin Plate design is attached on left rear area similar to Cat and Bobcat location. (Note: CT series are track models)



Caterpillar

Models


216,B	246,B,C	267 (track)
226,B	248,B	268B
228,B	252,B	272C
232B	256B,C	277C (track)
236,B	257 (track)	287C (track)
242,B	262B,C	297C (track)

Serial Number Information

Pre 2001 - 8 digits, example4ZN12345
 2001 and later - 17 digits, exampleCAT00262LCED001660

PIN # Location: same as Melroe Bobcat. On larger models 248 & 277, Plate is found on left side of machine under lift arm. (Also similar to Melroe Bobcat). On new style C models, public stamping is on the left side of machine between the two wheels.

Skid Steer Loaders

 Serial Number Location



Daewoo/Doosan

Models

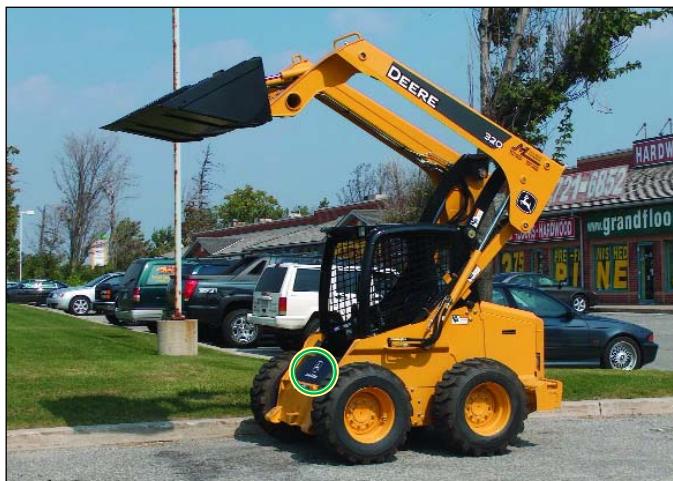
DSL601	450
DSL801	460
DSL802	1340
430	1550
440	

Serial Number Information

7 digits, exampleAB00776

Newer Models, example.....AF00174

PIN # Location: In cab of machine near operator's feet. Note: in 2005, Daewoo was purchased by Doosan. All machines as of 2005 are orange in colour.



Deere

Models

60	270	375	7775
70	317	3375	8875
90	320	4475	CT322
125	325	5575	CT332
170	328	5575	
250	332	6675	

Serial Number Information

13 digits, example.....KV0270B270522

PIN # Location: Old style machines, up high on right side ROPS support. New style, right side support in cab by driver's knee, behind right lift arm, as shown. (Note: CT models are track machines.)



Gehl

Models

3640E	5635	7810E
4240E	5640E	CTL55
4625	6636	CTL65
4635	6640E	CTL75
4835	7600	CTL85
5625	7800	

Serial Number Information

5 digits, example11385

2005 - 17 digits, example.....GHL03935T00001822

PIN # Location: On 2005 machines, left or right rear area (same as Bobcat and Caterpillar). Older machines: as shown in photo, behind right lift arm.

Skid Steer Loaders

Serial Number Location



IHI

Models

CL35

Serial Number Information

8 digits, exampleCQ0000018

PIN # Location: On left front of machine. (opposite side to photo)



JCB

Models

160	180	190	208S	1110T
165	180T	190	1105	
170	185	190T	1110	

Serial Number Information

17 digits, example.....SLP1855AXE7468967

PIN # Location: Same as Melroe Bobcat and Caterpillar. 2005- on the new 190/1110 Robot machines, the PIN plate is on the opposite side.

Note: "T" models are track machines.



Komatsu

Models

SK510-5	SK820-5	CK 25 Track
SK714-5	SK1020-5	CK 30 Track
SK815-5	SK1026-5	CK 35 Track
SK818-5	CK 20 Track	

Serial Number Information

17 digits, example.....KMDSK010P36A8000

PIN # Location: Inside below right lift arm at back of machine. Similar to Bobcat. Partially hidden by rear hood. Stand at rear to observe. On track machines at rear as shown in photo.



Liugong

Models


380
365A
375

Serial Number Information

6 digits, example800233

PIN # Location: On 380 model, cross member on edge of operator's compartment. On new 365, left side of machine at rear (outside face).

Skid Steer Loaders

 Serial Number Location



Mustang

Models

940	2050	2086
2026	2054	2090
2041	2066	2109
2044	2076	3935

Serial Number Information

5 digits, example.....119284
2005 and later - 17 digits, example.....MMC020255P00001123

PIN # Location: On rear of machine, similar to Bobcat. On larger track machines it may be on left side under lift arm, similar to Cat and Bobcat.



New Holland (Ford)

Models

LS120	* LS 160	* LS 190,B	LX 665
LS125	* LS 170	LX 465	LX 785
* LS 140	* LS 180,B	LX 485	LX 865
* LS 150	* LS 185B	LX 565	LX 885

Serial Number Information

6 digits, example134 253

PIN # Location: Most models - On right hand side cab post inside cab. L785-Right front of ROPS cage. * New LS series skid steer loaders are bright yellow and dark grey.



Thomas

Models

85	153	225
105	165	243
133	170	250
135	175	255

Serial Number Information

8 digits, exampleLE001355

PIN # Location: Inside of right lift arm at back of machine. Similar to Bobcat, but either side. View standing at rear of machine.



Volvo

Models

MC60	MC90
MC70	MC110
MC80	SL110


Serial Number Information

2005 and later - 17 digits, exampleMC60D103231

PIN # Location: On left rear of machine, similar to Bobcat. Stand at rear to view PIN plate on inside of left lift arm assembly.

Compactors - Smooth Drum

soil, landfill,
asphalt, pneumatic

 Serial Number Location



Bomag

Models

3W-10	BW135AF	BW-210PD
BMP-851	BW-140A	BW-90AD
BW-100-AD	BW142D	S-1014
BW-10AS	BW172D	S-35
BW-121A	BW-210	S-46
BW-130AD	BW-210A	S-812

Serial Number Information

10 to 12 digits, examplesAZ19C12345
109510123456

PIN # Location: Most models - right side of machine on second step area. Others, on steering console, front or left side.



Caterpillar

Models

CP-323C – vib soil	815F – soil	CB224 – vib asphalt
CS-423E – vib soil	825G – soil	CB334 – vib asphalt
CP-433E – vib soil	816F – landfill	CB335 – vib asphalt
CS-563C – vib soil	826G – landfill	PS-150B – pneumatic
CS-573D – vib soil	836G – landfill	
CS-583D – vib soil	CB214 – vib asphalt	

Serial Number Information

Pre 2001 - 8 digits, example4KN01240
2001 and later - 17 digits, exampleCATCS423LCFX00230

PIN # Location: On left rear frame, behind tire, identical to padfoot roller.



Dynapac

Models

CA-15	CA-151	CC-211	CH-31
CA-25	CA-251	CC-241	CH-32
CA-30	CA-511	CF-30	CK-10
CA-121D	CC-10	CF-43	CK-20
CA-141	CC-101	CH-30	


Serial Number Information

8 digits, example60310750

PIN # Location: Plate may be found on right hand side steering console, or rear beam of frame, or on divider beam between drum and rear half of machine.

Compactors - Smooth Drum

soil, landfill,
asphalt, pneumatic

 Serial Number Location



Hamm

Models

GRW6	HD-12	HD-90
GRW 15	HD-13	HD-110
GRW 18	HD-70	HD130
HD-10	HD-75	

Serial Number Information

6 digits, example100730

PIN # Location: On left side of machine near driver's entry point. On smaller driveway rollers, left rear ROP's support beam on outside edge.



Hypac

Models

C747C	C560A
C754A	C810
C835C	C820
C766C	C830
C530AH	C855A

Serial Number Information

12 digits, example.....101 981 07 2211

PIN # Location: On left side of machine in top step.



Ingersoll Rand

Models

SD-40	SD-150	DA-30	DD-25	DD-110
SD-70	SD-175	DA-40	DD-32	FX-130
SD-100	SD-180	DA-48	DD-35	PT125-R
SD-115	DA-22	DA-50	DD-65	SP-48
SD-122	DA-28	DD-23	DD-90	SP-56

Serial Number Information


older models - 5 digits

95 and newer - 6 digits, example158133

PIN # Location: On front side of rear unit near articulation point.

Compactors - Smooth Drum

soil, landfill,
ashphalt, pneumatic

 Serial Number Location



➔ **Protec**

Models

110
111

Serial Number Information

7 digits, example220-3758

PIN # Location: Left Side of machine near driver's step.



➔ **Rammax**

Models

CH4900

Serial Number Information

17 digits, exampleTVAAV95NY10000616

PIN # Location: Right side of machine on rail below cab.



➔ **SuperPac**

Models

320
421
540


Serial Number Information

6 digits, example100700

PIN # Location: Centre front of driver's cab near top edge of roller.
Note: Super Pac was purchased by Volvo.

Compactors - Smooth Drum

soil, landfill,
ashphalt, pneumatic

 Serial Number Location



Vibromax

Models


VM46	VM146	W355	W605
VM66	VM186	W365	W1105
VM106	W255	W405	W1405
VM116	W265	W465	W1805

Serial Number Information

6 digits, example 400206

PIN # Location: Below floor on undercarriage.

Compactors - Pad Foot

 Serial Number Location



Bomag

Models

BW124
BW 142 PD-2
BW124 PD
BW172 PD
BW213 PD

Serial Number Information

10 to 12 digits, exampleA219C12345
109610123456
101590123456

PIN # Location: Directly under the floor area in the step well on either the left or right hand side.



Caterpillar

Models

CP323C
CP433E
CP533E
CP563E
CP-563C

Serial Number Information

Pre 2001 8 digits, example5JN00878
2001 and later - 17 digits, exampleCAT0563CD5JN00878

PIN # Location: Left rear lower side of machine behind tire.



Dynapac

Models


CA-301
CA 302 PD
CC 252 PD

Serial Number Information

8 digits, example66320778

PIN # Location: Left side under cab. Plate may also be found on right hand side steering console, or rear beam of frame, or on divider beam between drum and engine.

Compactors - Pad Foot

 Serial Number Location



Ingersoll Rand

Models

SD-40D
SD-40F
SD-100F

Serial Number Information

6 digits, example141773

PIN # Location: Plate is attached on front or rear half of unit in articulation area. This plate may be on the left or right side.



Sakai

Models

SV400TB

Serial Number Information

10 digits, example.....VSV9T-10100

PIN # Location: Right side of cab area.

Mini-Excavators

Serial Number Location



➤ **Airman**

Models

AX05	AX27-U	AX45-2
AX08	AX30-U	AX45-U
AX10-U	AX37-U	AX50-U
AX20-U	AX40-U	HM45S-2

Serial Number Information

10 digits, example871C-020123

PIN # Location: On left side of machine directly beside operator's seat. Also stamped into bottom of boom at articulation point.



➤ **Bobcat**

Models

320	331
322	334
325	337
328	341

Serial Number Information

9 digits, example562316266

PIN # Location: On either the right or left front face below operator's cab.



➤ **Case**

Models

CX17B	CX36B
CX27B	CX50B
CX31B	

Serial Number Information

8 Digits - exampleN8TN02712

PIN # Location: On left front corner of machine. Plate is new style large plate held on with drive nails.

Mini-Excavators

Serial Number Location



➔ Caterpillar

Models

E70B	303 CR	307 B
301.5	303.5 C	308 B
301.8	304 CR	311 B
302.5 C	305 C	312 B

Serial Number Information

Pre 2001 - 8 digits, example7BZ12345

2001 and later - 17 digits, exampleCAT03025K4AZ02708

PIN # Location: On side of articulation joint, or on front of machine similar to Bobcat. Full 17 digit PIN will also be stamped beside (or) near PIN plate.



➔ Deere

Models

15	27ZTS	35ZTS
17ZX	27C ZTS	50,D
17ZTS	30	50ZTS
25	35D	

Serial Number Information

13 digits, examples.....T0017ZX219971
FF050ZX240447

PIN # Location: Similar to Caterpillar. On side of articulation joint, or on front of machine on either left or right side.



➔ Gehl

Models

153	353	753Z
223	373	803
283Z	383Z	1202
303	503Z	
353	603	

Serial Number Information

8 digits, example13800878

17 digits, exampleGHL0383ZT00013458

PIN # Location: On front of machine directly under front windshield. Similar to Bobcat.

Mini-Excavators

Serial Number Location



Hitachi

Models

EX 17U	EX 60U	Zaxis 160LC
EX 27U	Zaxis 80	
EX 35U	Zaxius 120	
EX 50U	Zaxius 135US	

Serial Number Information

7 digits, example10E-1736
Late Model - example1BSP220388

PIN # Location: On new machines: right front as shown in photo. On older machines and larger mini excavators: left front, similar to Bobcat.



Hyundai

Models

R15	R36
R16	R55
R22	R75
R28	R80
R35	

Serial Number Information

11 digits, exampleMC03EH 10325

PIN # Location: Front of machine, similar to Bobcat and Caterpillar. May be on left or right side depending upon model and year. Large models, on side of cab similar to Caterpillar.



JCB

Models

802	8014	8027
803	8015	8052
803	8015	8060
804	8016	8080ZTS
804	8018	

Serial Number Information

17 digits, exampleSLP08015XEG731833

PIN # Location: Right front or left front, similar to Bobcat and Hitachi.

Mini-Excavators

Serial Number Location



Komatsu

Models

PC09	PC20	PC40
PC12	PC27	PC50
PC15	PC30	PC58
PC18	PC35	PC78

Serial Number Information

5 digits, example37195

New ModelsKMT0D057V0192241

PIN # Location: On front of machine near boom arm connection. On smaller units, PIN plate is attached to front plate below operator's cab, similar to Bobcat.



Kubota

Models

KX41	KX71	KX151
KX41-2	KX101	KX161-2
KX61-2	KX121-2	KX191

Serial Number Information

5 digits, example23501

PIN # Location: On front face of machine directly in front of operator. Similar to most other mini excavators.



Liugong

Models

904C	922LC
906C	925LC
908C	933LC
915C	

Serial Number Information

17 Digits - example.....CLG00904T00025765

PIN # Location: On front of machine directly behind where boom attaches.

Mini-Excavators

Serial Number Location



Mitsubishi

Models

MM45
MM55

Serial Number Information

8 digits, exampleE1F00111

PIN # Location: On left front corner of machine. Note: Numbers are similar to Caterpillar. Mitsubishi builds machines for Caterpillar.



Takeuchi

Models

TB015	TB045	TB138FR	TB180FR
TB016	TB108	TB145	
TB025	TB125	TB153FR	
TB30UR	TB135	TB175	

Serial Number Information

7 digits, example1151234

PIN # Location: Similar to most other mini excavators. Also stamped at bottom of boom assembly (hard to read in paint).



ScatTrack

Models

254S	535
520V	545
530	

Serial Number Information

7 digits, example8000353

PIN # Location: On front edge of machine directly in front of operator.



Volvo

Models


EC15BXTV	EC35
EC20BXTV	EC55B
EC25	EW55B
EC30	EC155B

Serial Number Information

8 digits, example28115173

PIN # Location: On front edge of machine directly in front of operator, or on newer machine, on left front corner. Also PIN is stamped in near to PIN plate. Machines are made in France.

Mini-Excavators

 Serial Number Location



→ Yanmar

Models


B08-3	Vio20-2	Vio-70
B15	Vio27-2	Vio-75A
B15S	Vio35-2	
B25S	Vio40-2	
Vio15	Vio50-2	

Serial Number Information

8 digits, example25S10444

PIN # Location: On front face of machine directly in front of operator, or left side front. Note: newer models are manufactured by Volvo.

Air Compressors

 Serial Number Location



→ Atlas Copco

Models

XAS 90 DD	XAS 175 JD
XAS 90 JD	XAS 750
XAS 175 DD	

Serial Number Information

6 to 9 digits, examples.....222123
606123
HOL123456

PIN # Location: Bottom right front corner of machine.



→ Ingersoll Rand

Models

P100	P175
P130	P185
P160	WJD

Serial Number Information

6 digits, example157111

PIN # Location: Inside compressor on right side at rear. Do not confuse engine serial number plate, usually John Deere with Ingersoll Rand Plate.

Acknowledgements

The Ontario Sewer and Watermain Construction Association
thanks the following people for their commitment, time and effort
devoted to its anti-theft initiatives and the development of this guidebook.

Retired O.P.P. Detective Constable George Kleinsteiber

Auto Theft Section, Criminal Investigation Bureau

Board of Directors, OSWCA

Industry Contacts

Caterpillar

Kep LaSota

LaSota_Kep@cat.com

309-675-1233

Tracey Cook

Cook_Tracey@cat.com

309-494-1382

John Deere

Sherry Iaccarino

IaccarinoSherryK@JohnDeere.com

1-866-779-0073

Case - New Holland

Beth Schaefer

beth.schaefer@cnh.com

262-636-7837

Melroe-Bobcat

1-800-609-9991

701-678-6285

Hitachi

910-996-8100

**Should you need more information on any machine in this booklet,
or information on any other type of equipment,
contact the writer by email at kleinsge@rogers.com**

REWARD

for information leading to arrests
made in connection with stolen
construction equipment or materials
or information leading to its recovery

1-800-222-TIPS

EARN A CASH REWARD - CONFIDENTIALITY ASSURED



Member

ONTARIO SEWER AND WATERMAIN CONSTRUCTION ASSOCIATION

CRIME  STOPPERS

www.stolenheavyequipment.com

The contents of this guide book may be reproduced only with the written permission of the Ontario Sewer and Watermain Construction Association.
Credit to the OSWCA must be included and clearly visible.